

# LME23

PARIS, FRANCE • 3-5 June 2024



## 23<sup>rd</sup> ANNUAL CONSULTATIVE MEETING ON

### LARGE MARINE ECOSYSTEMS AND COASTAL PARTNERS (LME23)

*“Advancing LME consultations to respond to global challenges through transformative actions and lasting impacts”*

3 – 5 June 2024

UNESCO Headquarters, Paris, FRANCE

#### LOGISTICS NOTE

#### How to get there?

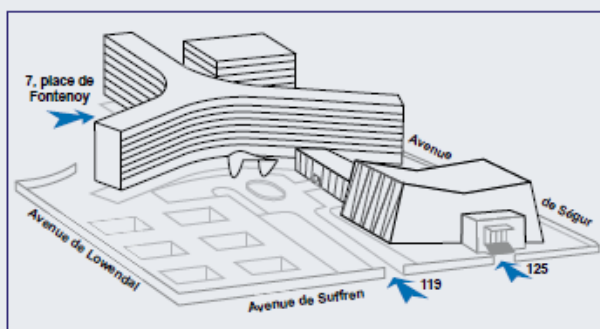
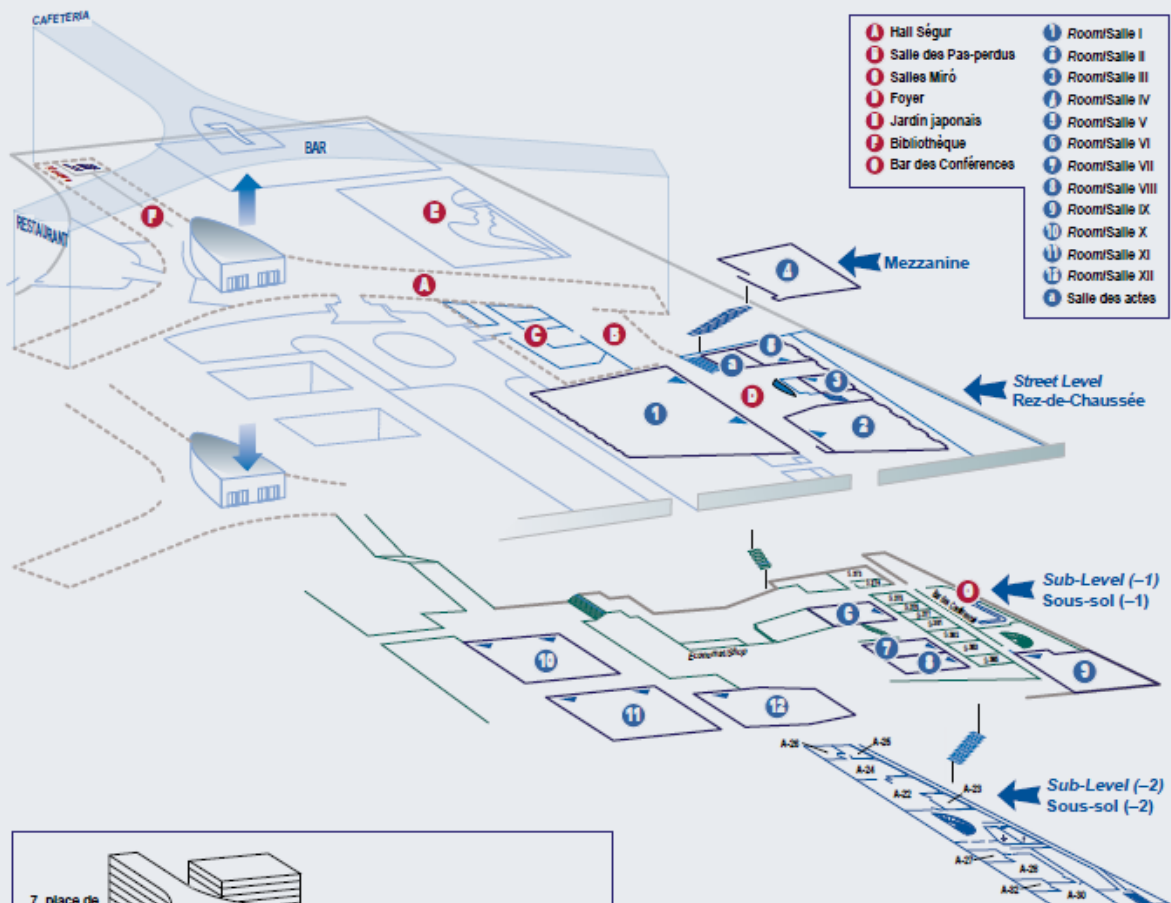
The Meeting will take place at the UNESCO Headquarters – Fontenoy building.  
Address: 7 place Fontenoy, 75007 Paris, France  
Plenary meeting room: Room IX (Sub-Level -1)

#### Access to UNESCO:

To access the UNESCO building, please use entrance Fontenoy on Place Fontenoy. On the first day, please provide a valid European Union ID Card or passport to security desk and collect your badge onsite from IOC staff.

**All participants must have their passports, as well as their invitation letter, with them in order to register.**

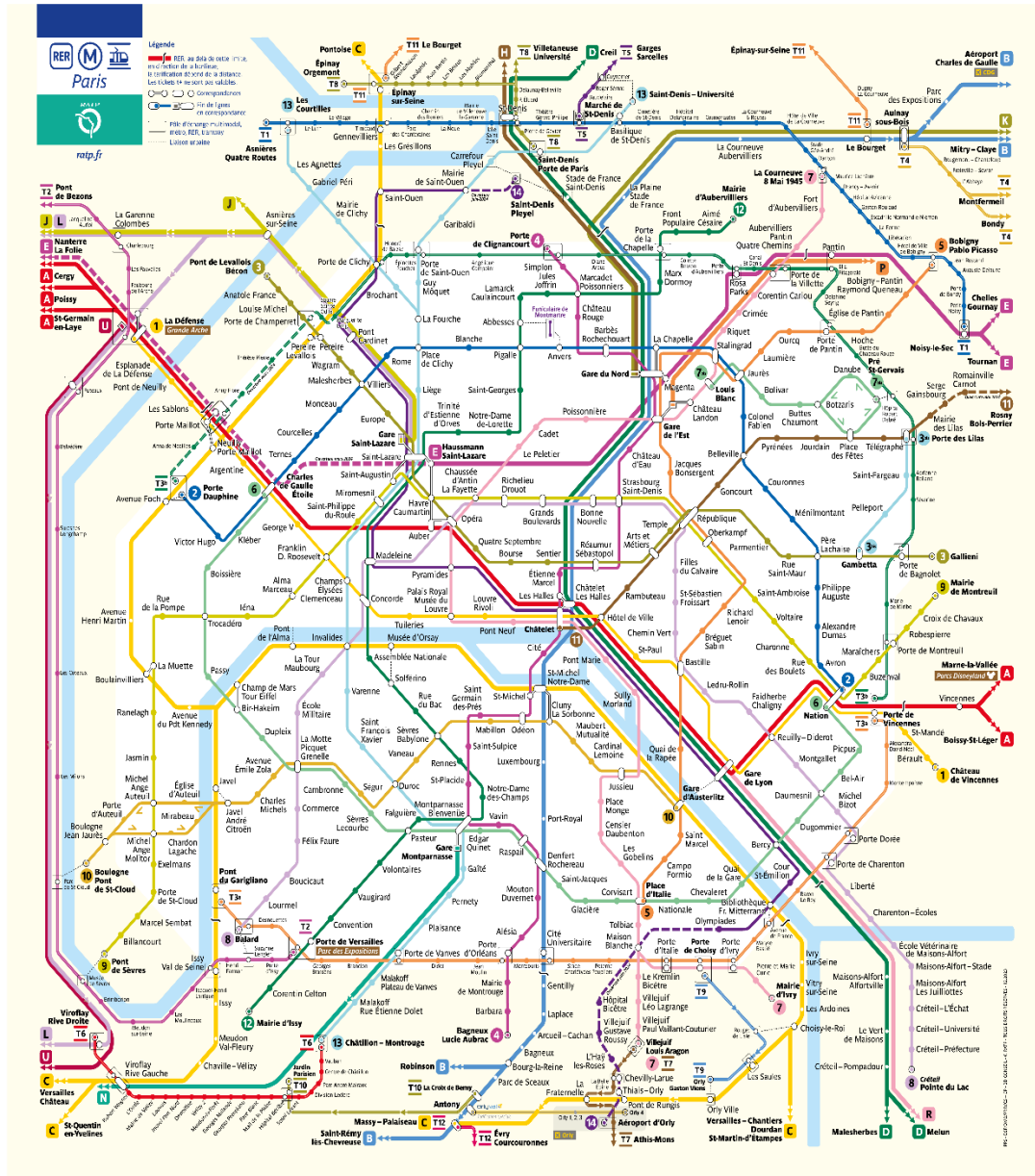
# UNESCO HEADQUARTERS



## Transportation system in Paris (Metro, Trains, Connections with the airports):

[www.ratp.fr/en](http://www.ratp.fr/en)

### Paris metro



### General information:

Wifi is available in all premises of UNESCO:

- **Username:** hq-air
- **Password:** uneswifi

**Electricity:**

France operates on 220 Volts and 50Hz on AC.

**Tourism in Paris:**

[www.parisjetaime.com/eng/](http://www.parisjetaime.com/eng/)

[www.timeout.com/paris/en](http://www.timeout.com/paris/en)

**Weather in Paris:**

[www.meteofrance.com/previsions-meteo-france/paris/75000](http://www.meteofrance.com/previsions-meteo-france/paris/75000)

**EU emergency number:**

112 (Free call from all phones – Service in English / French / Spanish / Arabic).

**Meals and beverages:**

You will be able to buy lunch at the UNESCO cafeteria, situated on the 7th floor of the Fontenoy Building.

Opening hours: 11h30 – 14h30, Monday to Friday.

## 'Green Hotels' near UNESCO Headquarters

The hotel industry, be it for tourism or for business, has a large impact on the environment. Many hotels around the world have put in place specific measures to 'green' their facilities and activities. External certification, rather than self-declaration, helps assess the environmental impact of a hotel. In line with UNESCO's [Environmental Sustainability and Management Policy](#), and in an approach to reduce the carbon footprint of UNESCO-related meetings, the below list provides an overview of certified/labelled hotels within easy reach (walking distance or accessible by public transport in less than 25 mins) from UNESCO Headquarters at 7, place de Fontenoy.

Among the most relevant labels is the [European Ecolabel](#). It is based on 67 criteria relating to energy, water, waste, cleaning products, overall environmental management and is renewed every 5 years. The [Green Key](#), approved by UNEP, is based on 60 criteria covering water management, general management, energy saving, waste, ecological maintenance, green spaces, employees, customer information and is renewed every 4 years. [ISO 14001](#) is a certification, valid for 3 years, that proves that the hotel or organization has an effective environmental management system in place.

Hotel name	Distance from UNESCO HQ	Label and key sustainability features	Access for PRM	Rate/night		Breakfast	Numbers of rooms
				Single	Double		
<b>Hotel Baldi***</b> <a href="https://www.magna-arbor-hotels.com">https://www.magna-arbor-hotels.com</a> 42 Bd Garibaldi, 75015 +33(0)1 47 83 20 10	600 m, 8 mins walking distance	<a href="#">Green Key</a> / <a href="#">Information on Environment</a> Ecological and natural cleaning products, energy, water, and waste management in place. Works in close collaboration with NGO to limit waste production.	Yes	140€	143€	13€	28
<b>Le Pavillon 7***</b> <a href="https://hotel-lepavillon.com">https://hotel-lepavillon.com</a> 54 Rue Saint-Dominique, 75007 +33(0)1 45 51 42 87 <a href="mailto:lepavillon@green-spirit-hotels.com">lepavillon@green-spirit-hotels.com</a>	1.2 km, 16 mins walking distance	<a href="#">Green Key</a> & <a href="#">European Ecolabel</a> / <a href="#">Information on Sustainability</a> Ecologic and natural cleaning products, natural stones, ecological flooring and carpet, special filtering technology for pure mountain air quality. 3 rooms equipped especially for electrosensitive people.	No	171€	178€	10€	15
<b>Amelie 7**</b> <a href="https://hotelandamelie-paris.com">https://hotelandamelie-paris.com</a> 5 Rue Amélie, 75007 +33(0)1 45 51 74 75 <a href="mailto:amelie@green-spirit-hotels.com">amelie@green-spirit-hotels.com</a>	1.3 km, 17 mins walking distance	<a href="#">Green Key</a> & <a href="#">European Ecolabel</a> / <a href="#">Information on Sustainability</a> Ecologic and natural cleaning products, waste sorting, LED lighting. Breakfast buffet with organic, fair trade, local products. No lift.	No	171€	180.5€	12€	16
<b>Louison 6***</b> <a href="https://www.louison-hotel.com">https://www.louison-hotel.com</a> 105 Rue de Vaugirard, 75006 +33(0) 1 53 63 25 50 <a href="mailto:welcome@louisonhotel.com">welcome@louisonhotel.com</a>	1.4 km, 18 mins walking distance	<a href="#">European Ecolabel</a> / <a href="#">Environmental Guidelines</a> Ozonated water and eco-labelled products used for cleaning, energy consumption from renewable energy sources, use of local products. Recycles light bulbs, batteries and cartridges.	No	229€	279€	30€	42
<b>Bourgogne et Montana 7****</b> <a href="https://www.bourgogne-montana.com">https://www.bourgogne-montana.com</a> 3 Rue de Bourgogne, 75007 +33(0) 1 45 51 20 22 <a href="mailto:bmontana@bourgogne-montana.com">bmontana@bourgogne-montana.com</a>	1.8 km, 23 mins walking distance	<a href="#">ISO 14001</a> / <a href="#">Information on Sustainability</a> Change of sheets only when requested, no single-use plastics, paper used is produced by social centers for local employment. Has an access ramp at the entrance of the hotel and 2 specially designed rooms for persons with reduced mobility. Equipped with a lift.	Yes	/	198€	15€	31
<b>Bonsoir Madame 6****</b> <a href="https://www.bonsoirmadame.paris">https://www.bonsoirmadame.paris</a> 65 rue madame, 75006 +33(0)1 45 48 84 54 <a href="mailto:hotel@bonsoirmadame.paris">hotel@bonsoirmadame.paris</a>	2.3 km, 20 mins by public transport	<a href="#">Green Key</a> / <a href="#">Information on environmental services</a> Local products and engagement with local craftsmen and artists for interior design. Waste and energy management system in place, water dispenser and refillable bottles offered. Beehive exists on one of the terraces to support the city's biodiversity (honey can be bought).	No	240€	276€	16€	34
<b>Hotel des Marronniers 6***</b> <a href="https://www.hoteldesmarronniers.com">https://www.hoteldesmarronniers.com</a> 21 Rue Jacob, 75006 +33(0) 1 43 25 30 60 <a href="mailto:hotel-des-marronniers@orange.fr">hotel-des-marronniers@orange.fr</a>	2.4 km, 18 mins by public transport	<a href="#">Green Key</a> / <a href="#">Information on Ecoresponsability</a> Ecologic and natural cleaning products, water limiters and low consumption light bulbs are installed. All waste is sorted. Use of renewable energy sources. Socially and sustainably committed service providers and suppliers chosen, organic and seasonal products for breakfast, eco-responsible garden, rainwater is recovered for cleaning. Equipped with a lift.	No	168€	177€	15€	36

Please note that all information regarding the green labels and criteria as well as room rates have been gathered from the respective hotel websites, and UNESCO has no responsibility for their accuracy.

Last update: October 2022